

## TIMEMANAGER

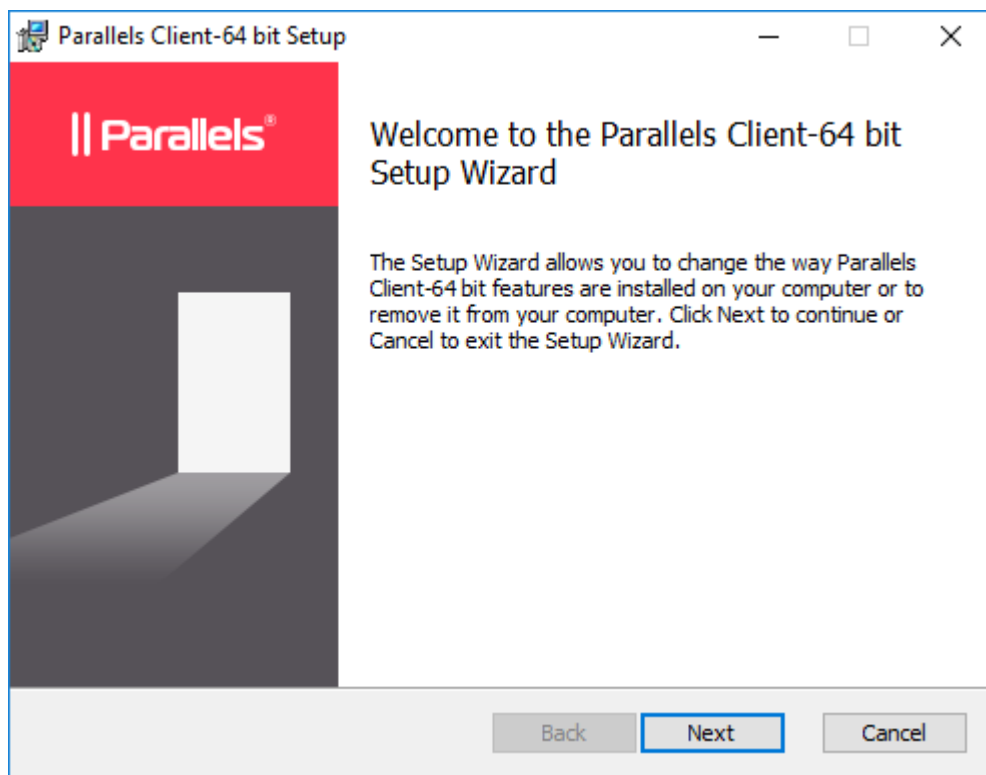
### *Installation RAS Client v18.1*

#### **1. Download Client software**

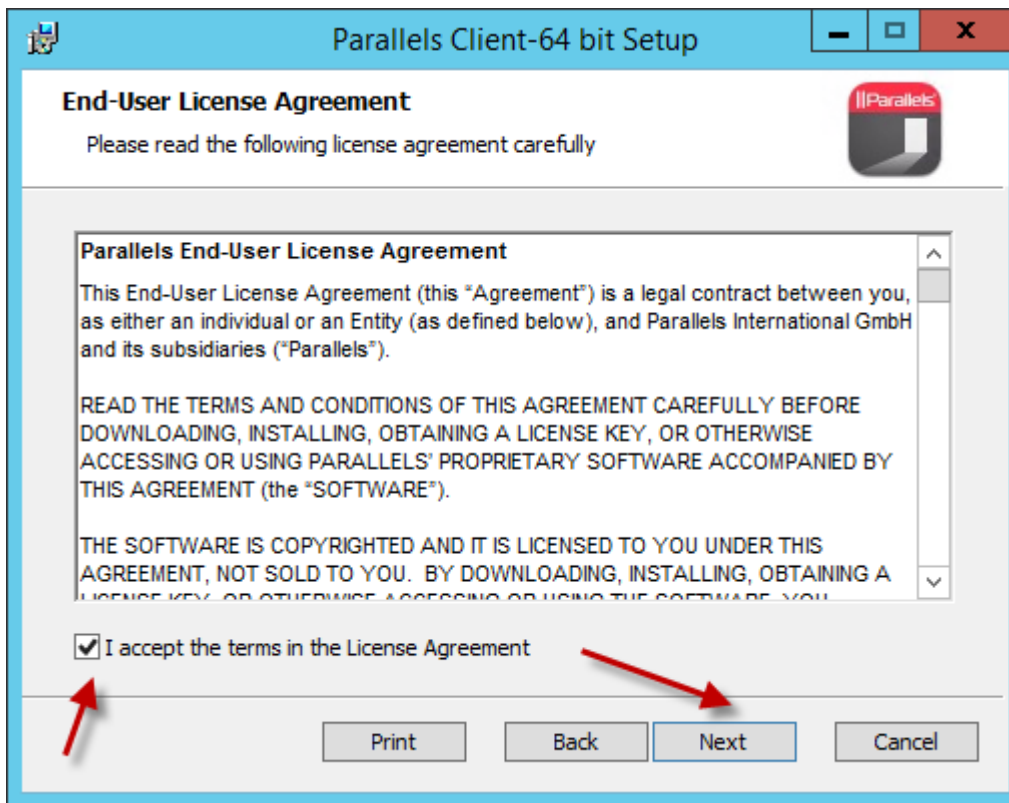
- 32bit : <http://download.dotsys.eu/util/2X/V18.1/RASClient-18.1.22712.msi>
- 64bit : <http://download.dotsys.eu/util/2X/V18.1/RASClient-x64-18.1.22712.msi>

Installation of Client software

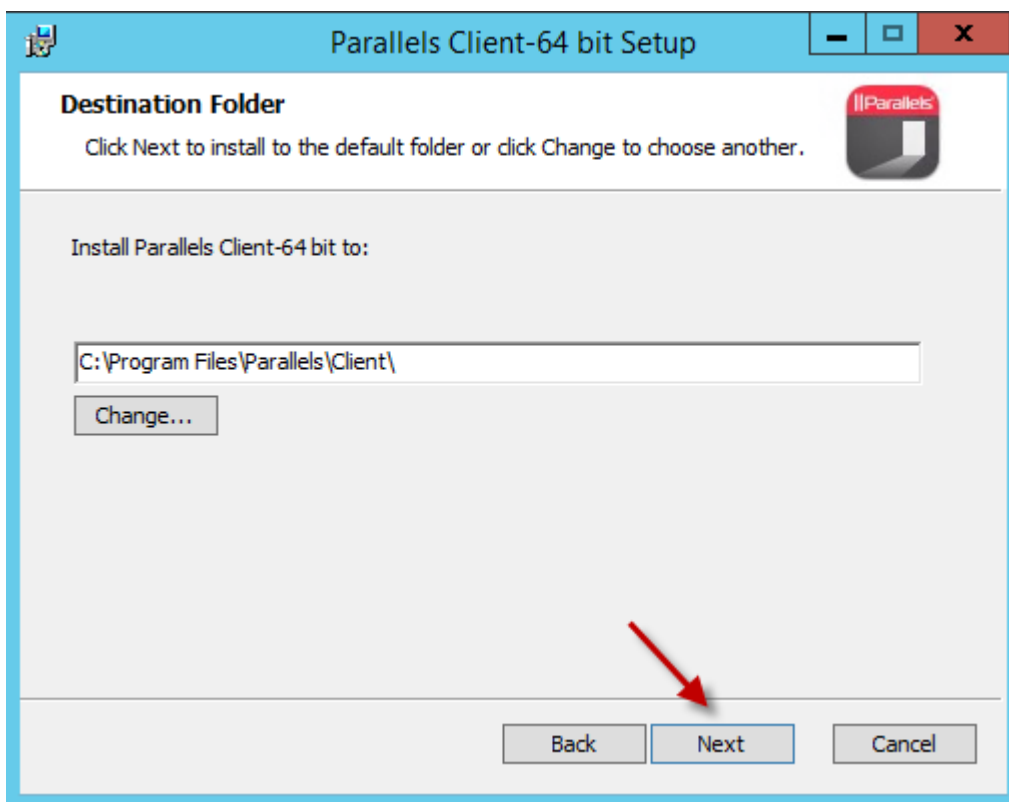
Double-click on the link for the 32 or 64 bit version according to your Windows OS.



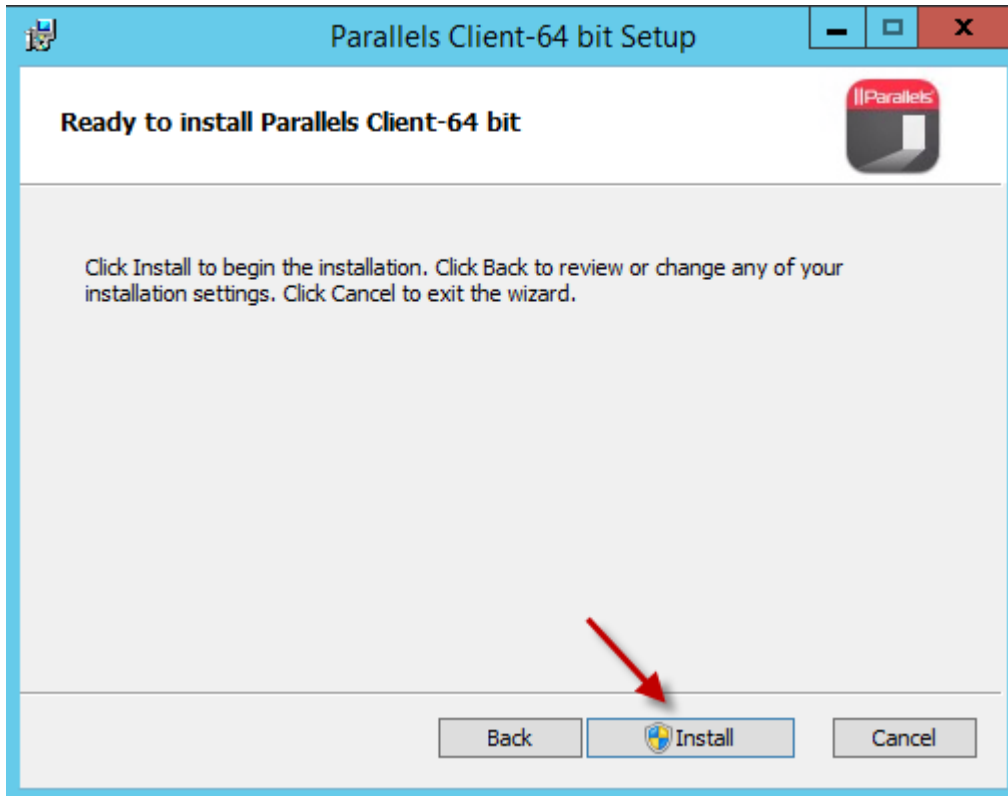
Click “Next”



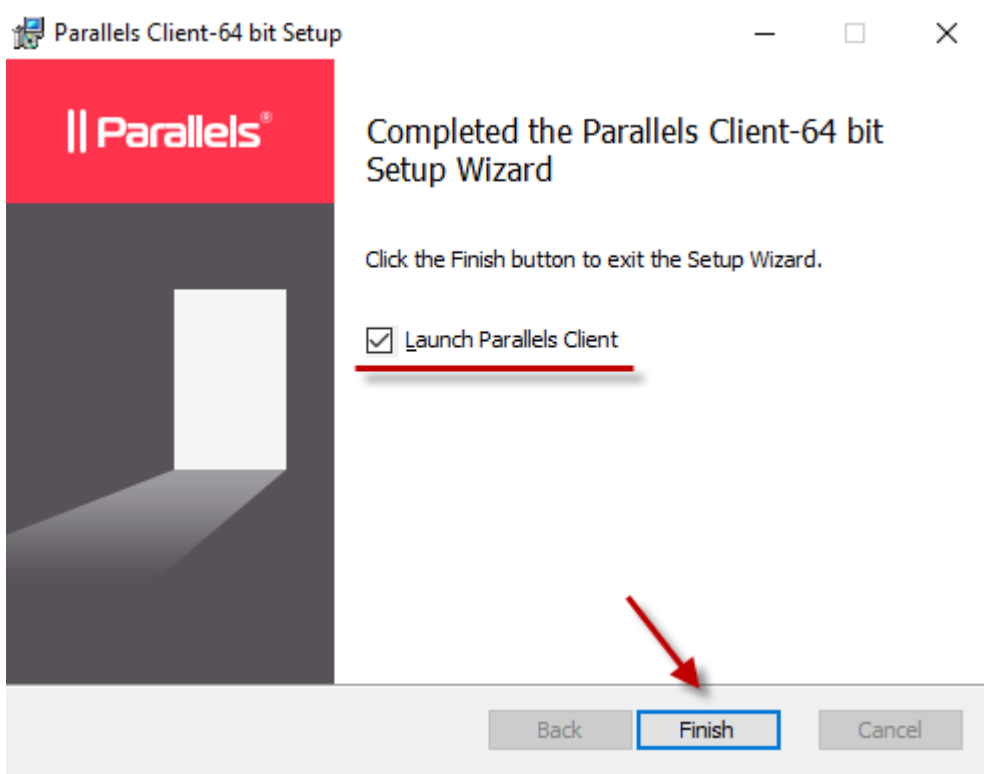
Accept the terms  
and click “Next”



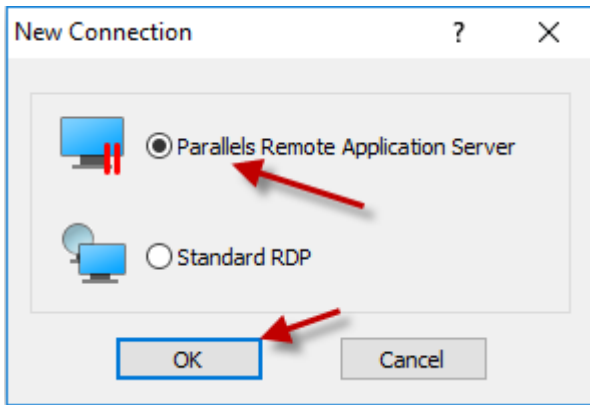
Click “Next”



Click "Install"



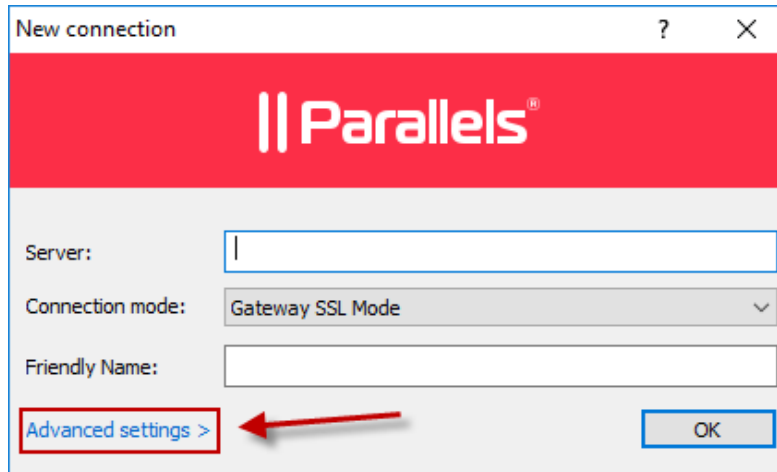
Leave the checkbox to launch the program checked and click "Finish".



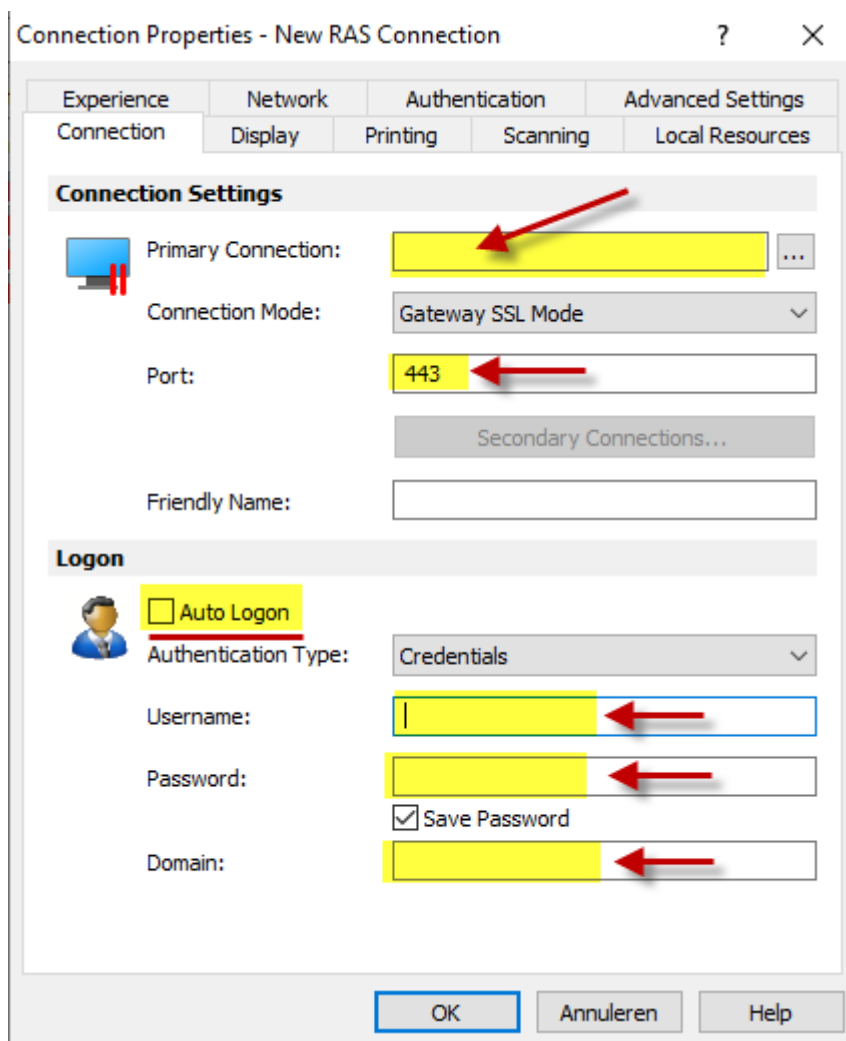
The 2X Client software is launched and proposes to make a new connection, because for now, there is none. Click "OK" to do so.

## 2. Create the new connection with following properties

On the tab "New Connection"

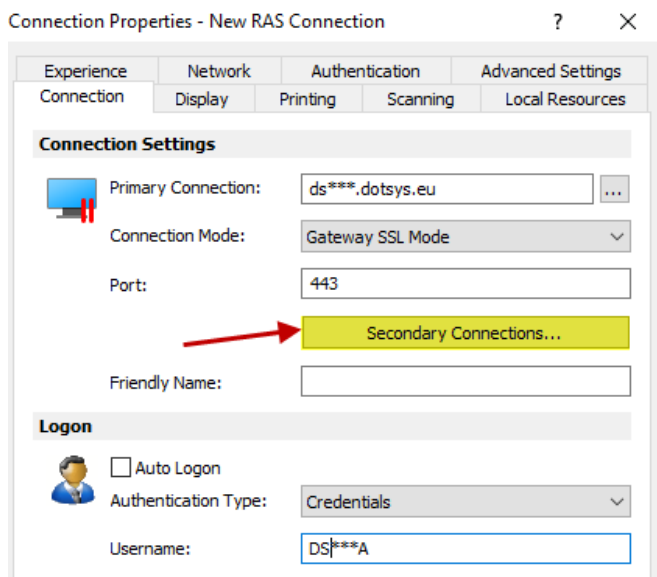


Click on "Advanced Settings >"



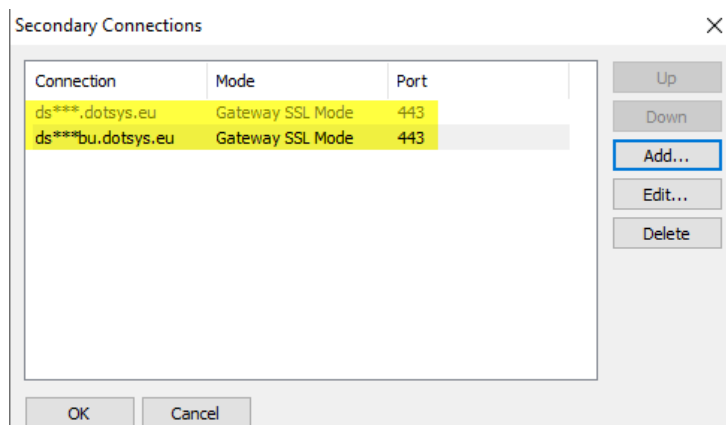
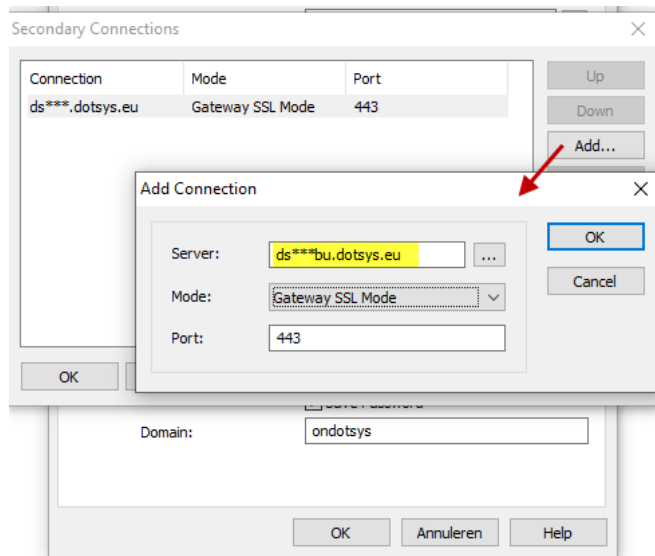
Give in the yellow-marked fields as on the screen. This information with the usernames & passwords and domain will be provided to you by Dot Sys. Standard connection mode is Gateway SSL mode on port 443 unless provided differently by Dot Sys.

When you entered the "Primary Connection" please also add the backup connection. Click on the button "Secondary Connections" to open this menu:

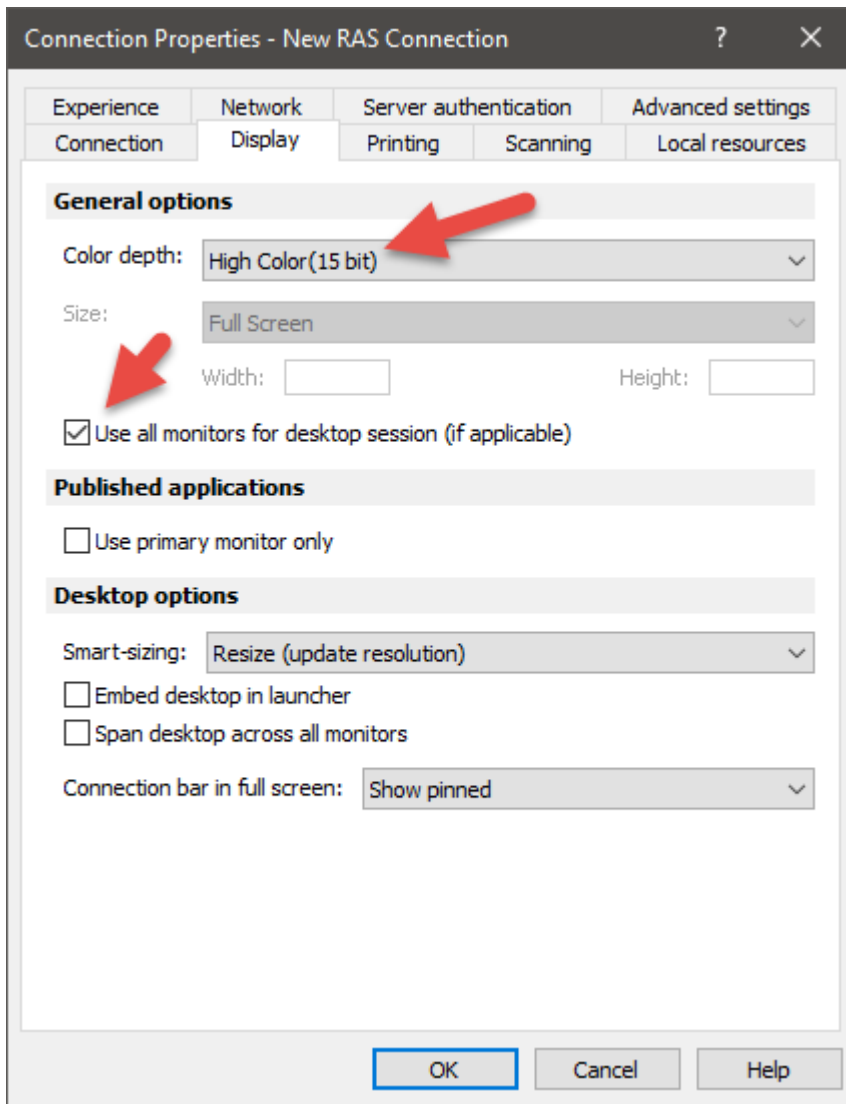


Please click on the "Add" button on the right to add a new connection, here you will enter the same servename as for the primary connection but you add "BU" behind DS\*\*\*

For Example: DS000.DOTSYS.EU will have a secondary connection DS000BU.DOTSYS.EU



On the tab "Display"



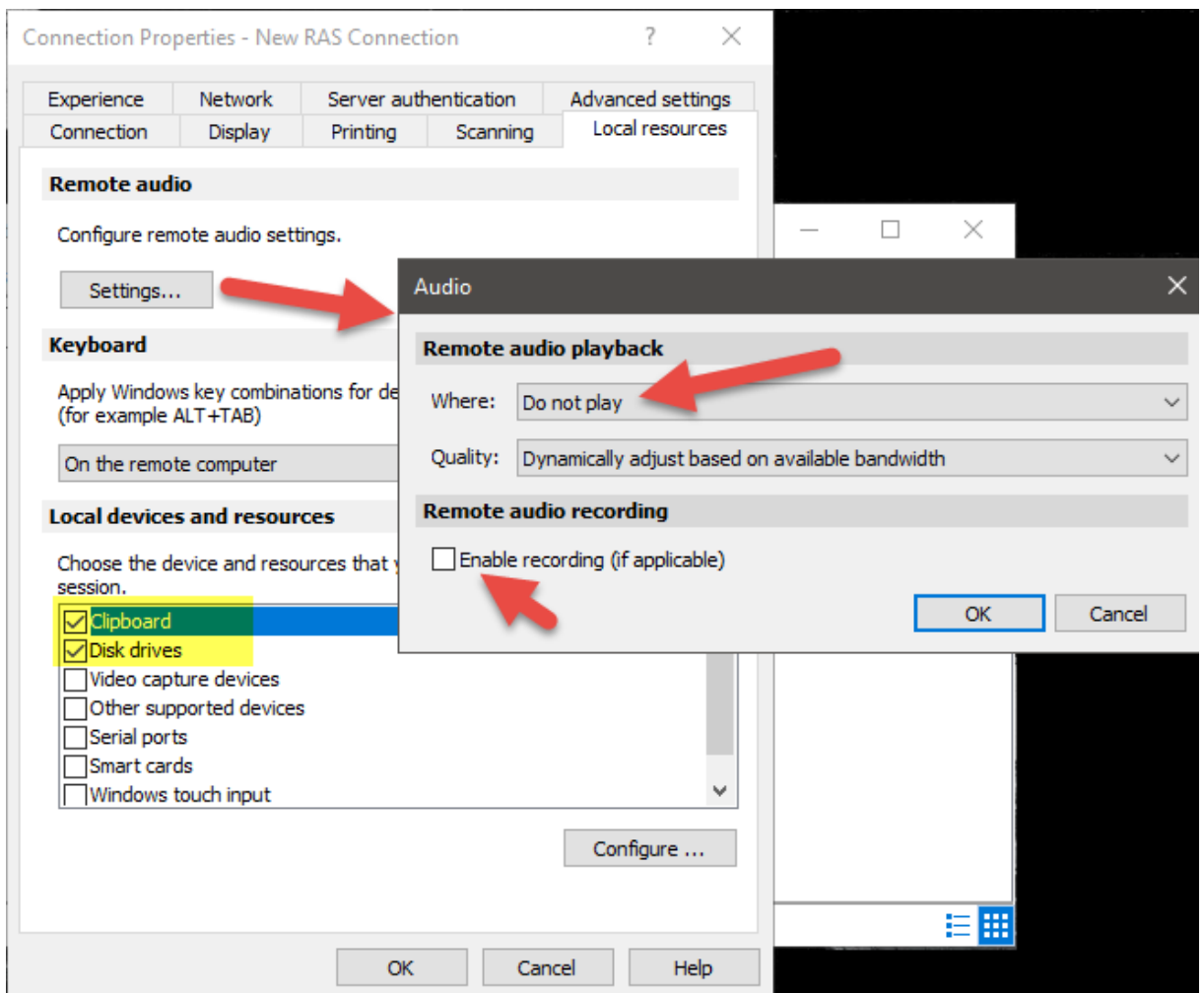
Set "Color Depth" to High Color (15 bit)"

Select "Use all monitors for Desktop session ..."

Unselect "Use primary monitor only"

All other Desktop Options must be turned off.

On the tab “Local Resources”

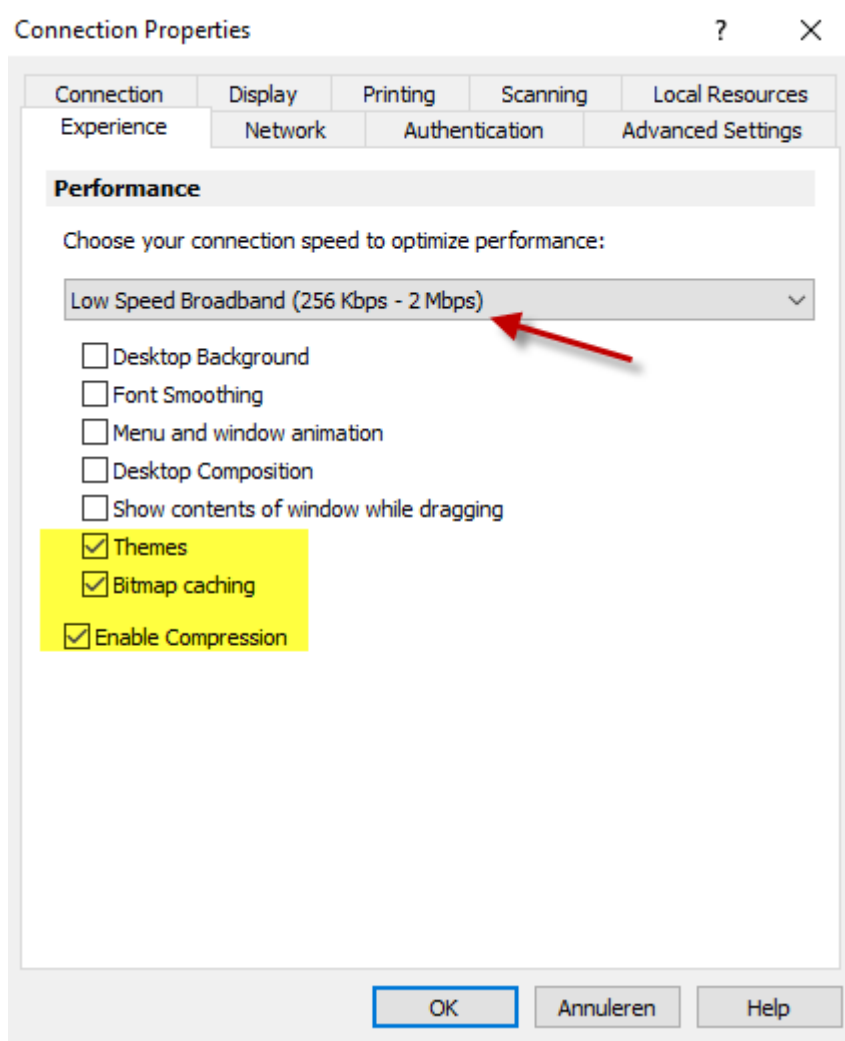


Under Remote Audio, click on “Settings” and set the Audio settings for “Remote Computer” to “Do not play” and disable the “Recording” option, afterwards click on “OK”.

Only enable the option “Clipboard” and “Disk drives”.  
Uncheck the other “Local devices”.

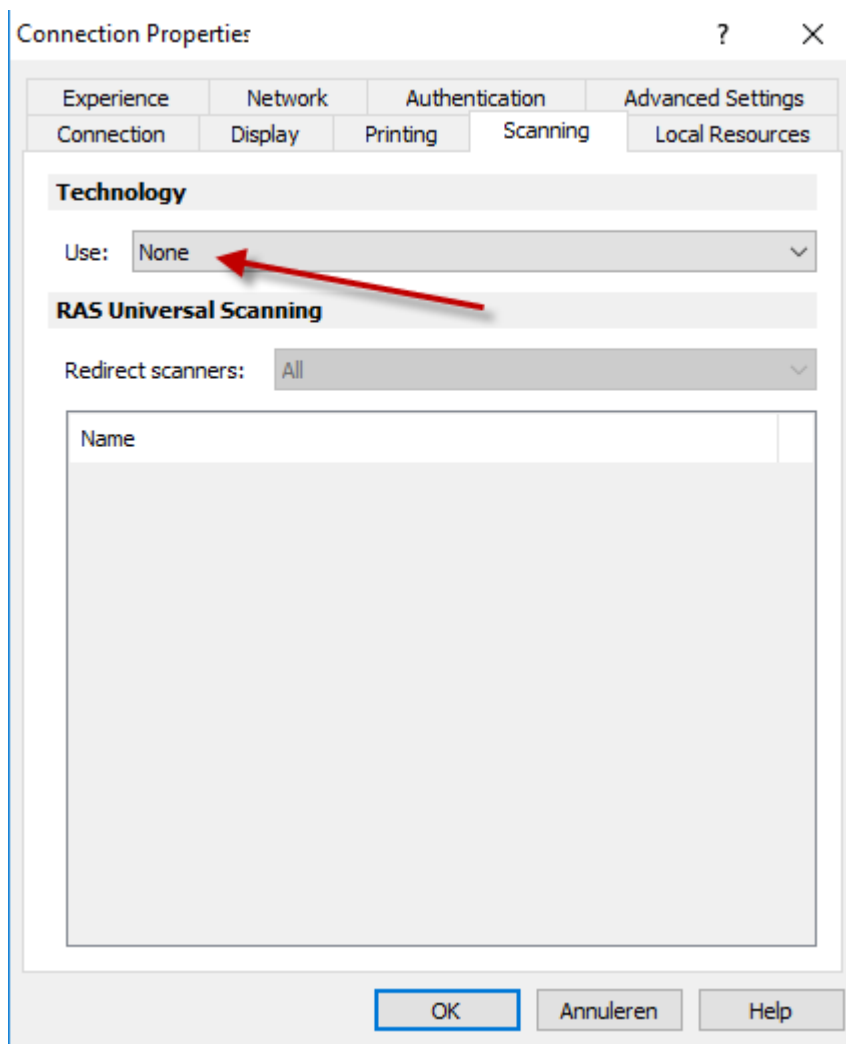


On the tab "Experience"



Select "Low Speed Broadband" and leave the rest on default settings for this type of connection. (This means only "Themes", "Bitmap caching" and "Enable Compression" are enabled)

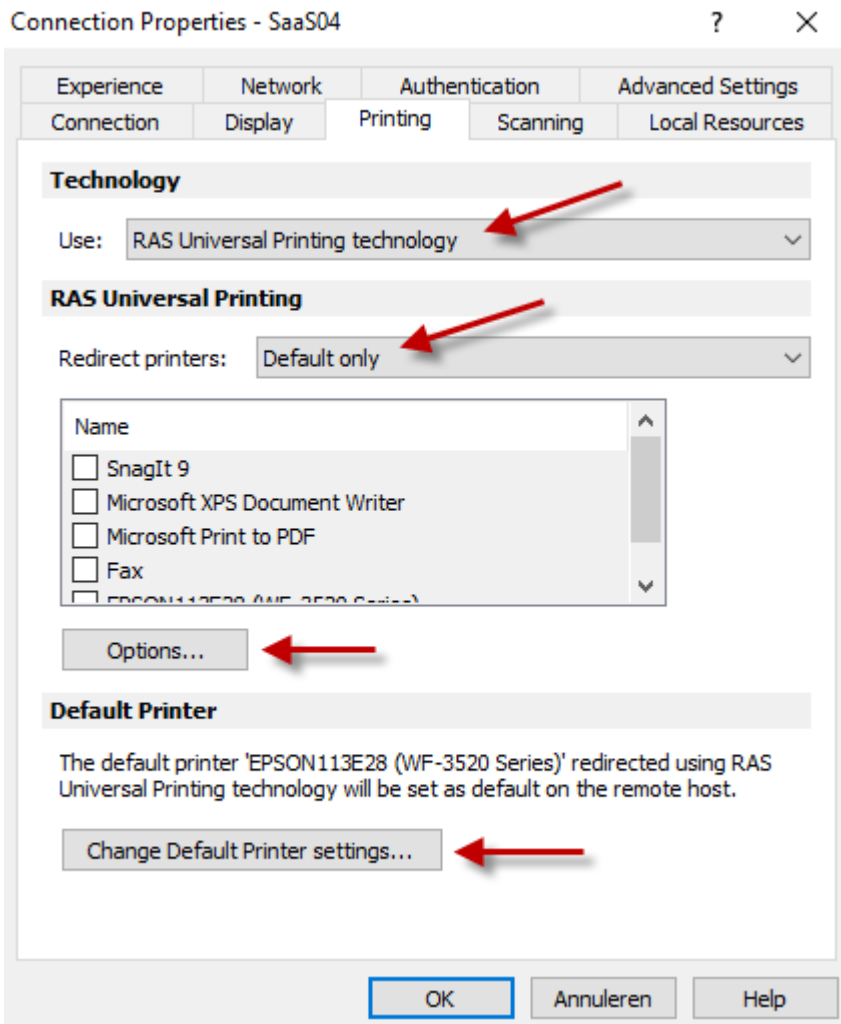
On the tab "Scanning"



Select "None"

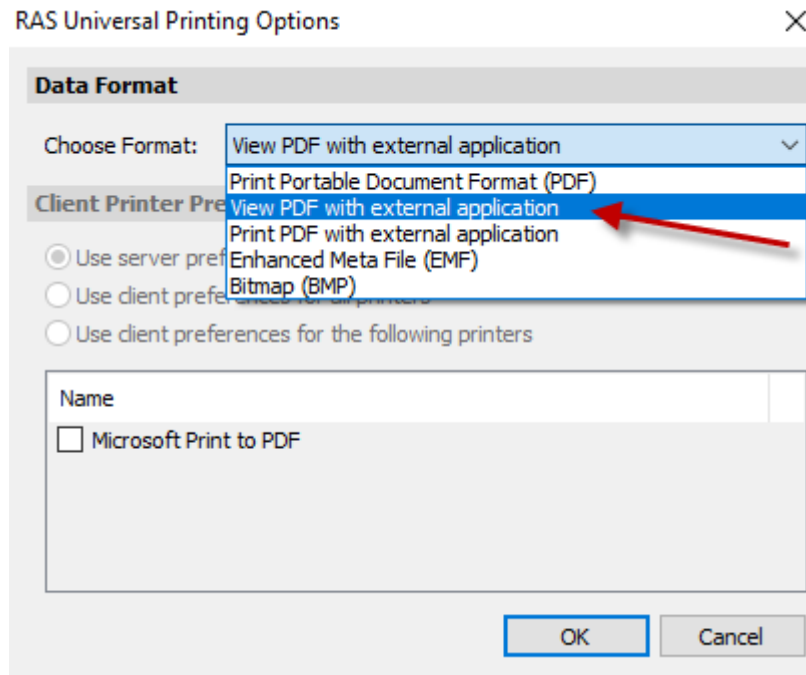
### 3. Printer Settings

On the tab “Printing”



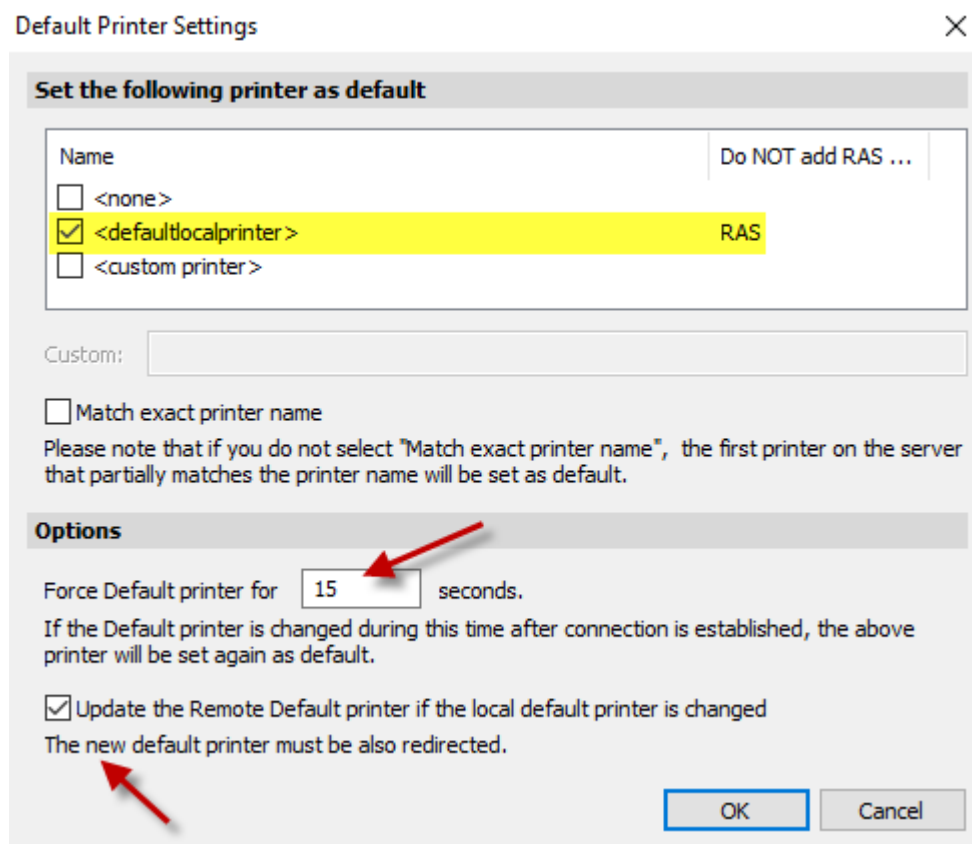
Select “RAS Universal Printing technology”,  
Set Redirect Printers to Default Only.

Click on Options...



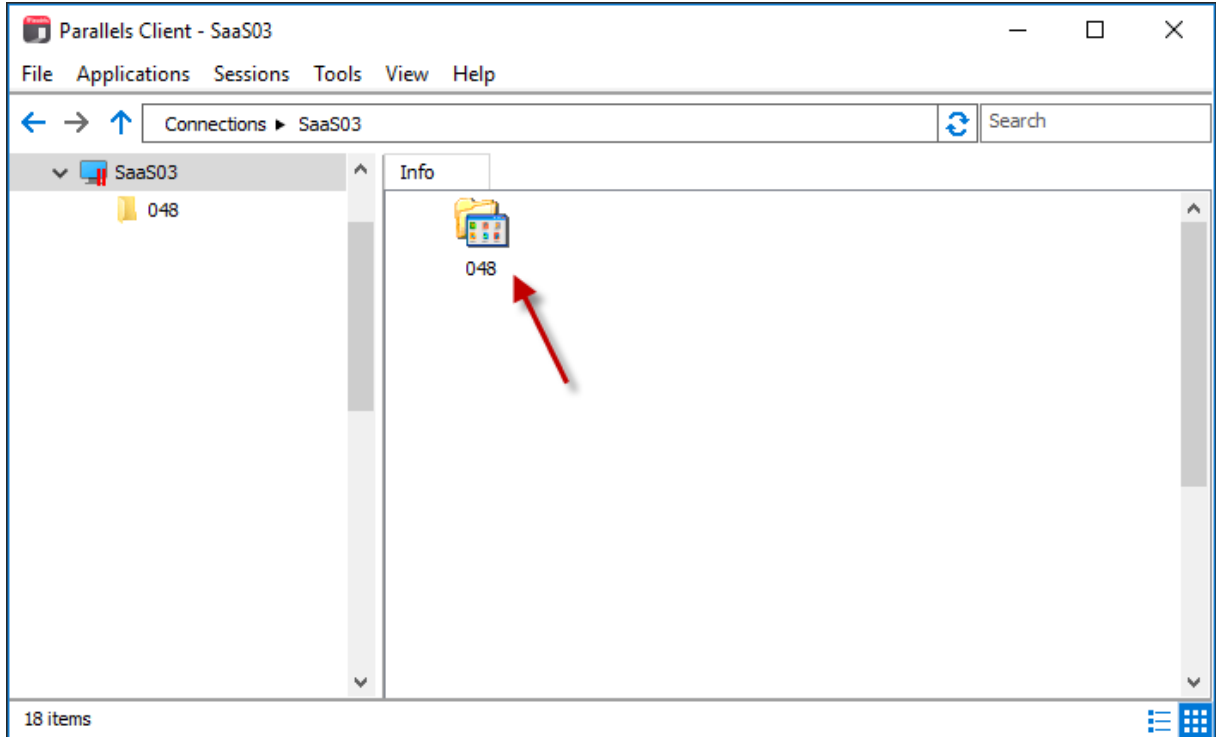
Set to "View PDF with external application" and click OK

On the previous screen, click on "Change Default Printer Settings"

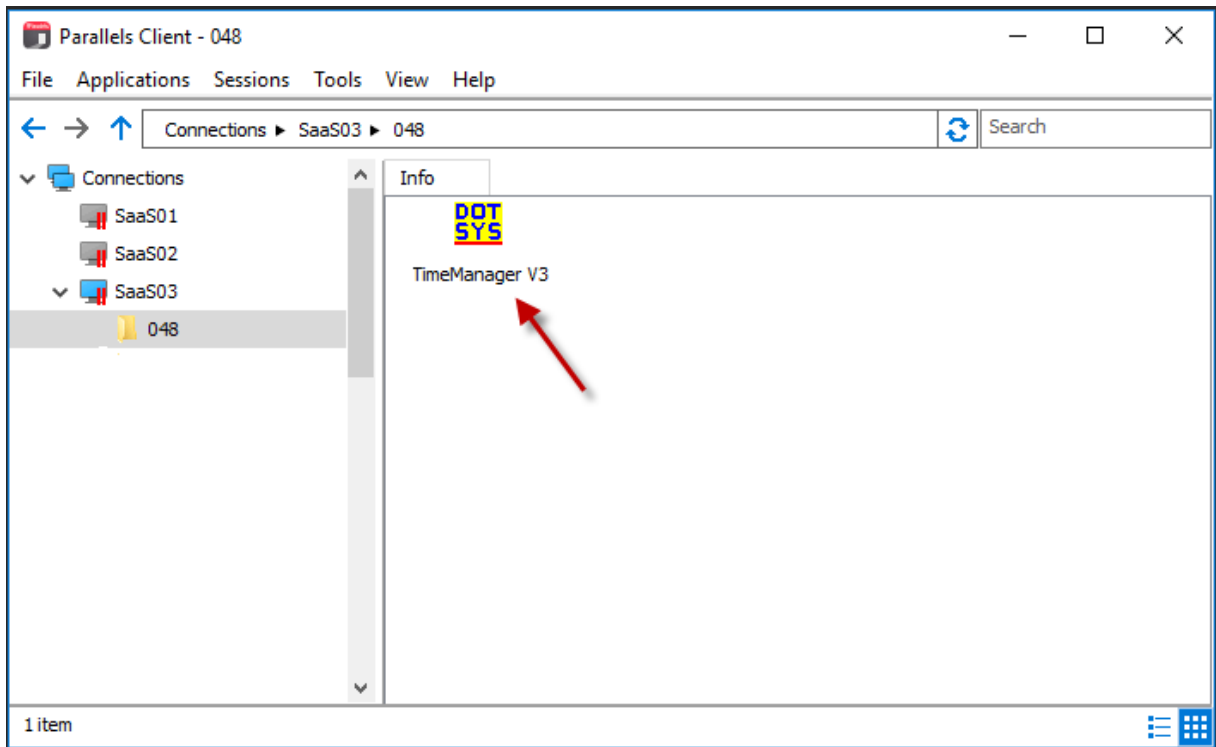


Select the Printer <defaultlocalprinter> as your standard printer, set Force Default Printer for 15 seconds and tick on "Update the Remote Default Printer if the local default printer is changed and click OK.

If the parameters are OK, you can close the Connection Properties window by clicking OK and you should see the following :



Double Click on Company-icon stated with your Company number or name.



You will see here all the applications that are released for the specific user. Doubleclick this shortcut to open the program.